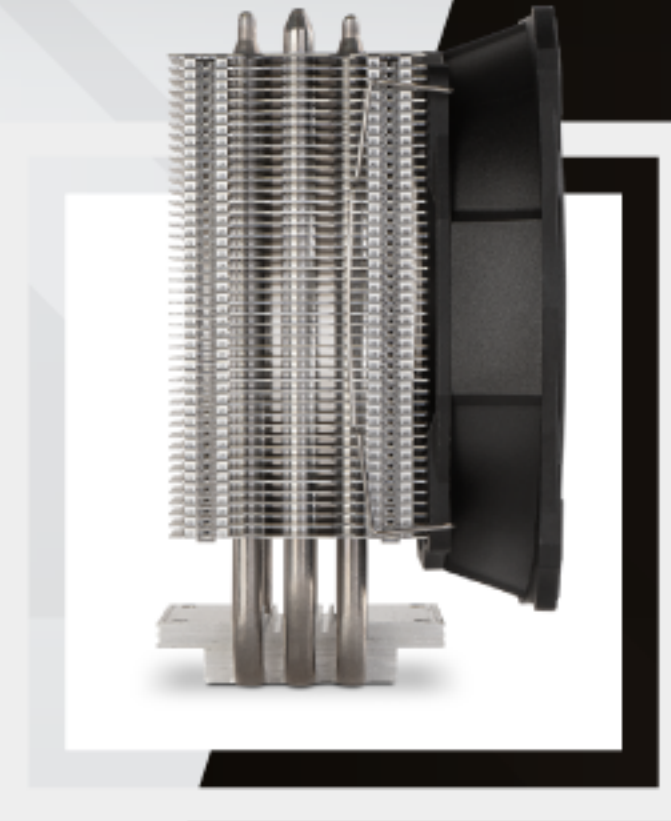
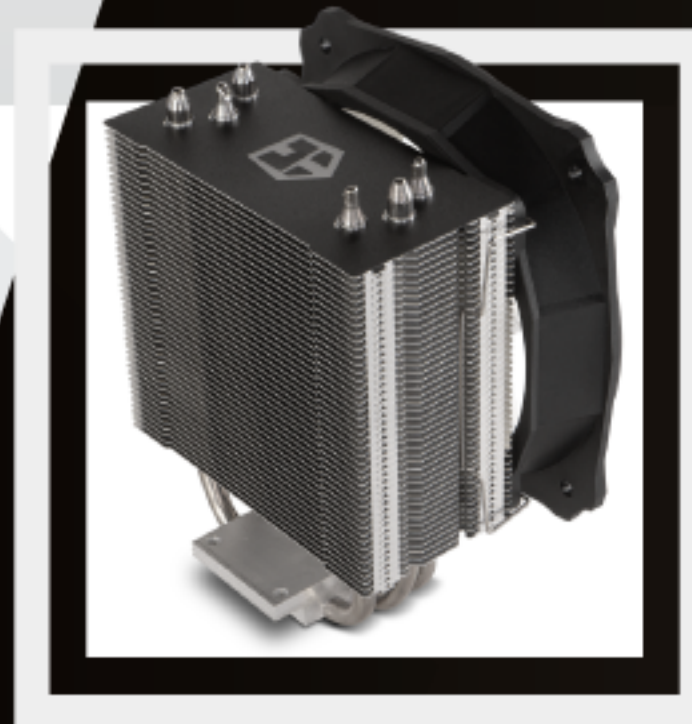


H-212



SMALL DIMENSIONS
EASY INSTALLATION,
HIGH INTEL & AMD COMPATIBILITY



HUGE COOLING CAPACITY
3 COPPER HEATPIPES

HEATSINK SPECIFICATIONS

Fan	1 x 120 mm (included)
Heatpipes	3
Material	Copper (heatpipes): Aluminium (fins)
Weight	450 g
Dimensions	120 (L) x 73 (W) x 135 (H) mm

FAN SPECIFICATIONS

Bearing	Hydraulic
Fan speed	500 ~ 1600 (+/- 10%) RPM (PWM)
Air flow	56.0 CFM \pm 10%
Acoustical noise	16 dBA - 20.2 dBA \pm 10%
CPU power	130 W (Max.)
MTBF	>40.000 h
Connector	4 pin
Dimensions	120(L) x 120(W) x 25(H) mm

Intel Socket
LGA 1151/LGA 1150/LGA 2011/LGA 2011-3/LGA 1156/LGA 1155/LGA 1200/LGA 2066

AMD Socket
AM4